

Go to www.vtechbabycare.com to register your product for enhanced warranty support and the latest VTech product news.

Advanced HQ Max
Advanced HQ Max Twin
7" High-Quality
Pan & Tilt Video Monitor



For more support information
Model No.: 346700 Model No.: 346800



vtech

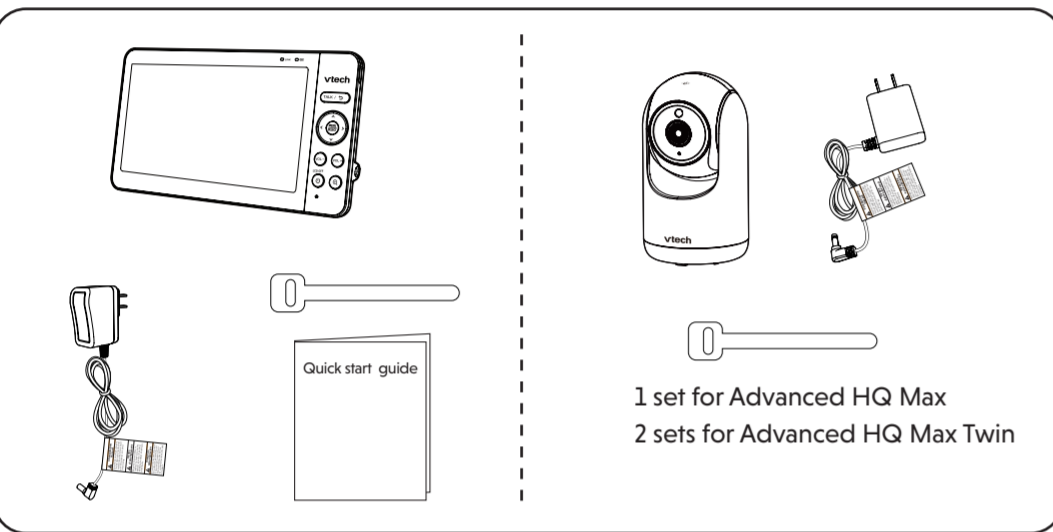
Quick start guide

Congratulations

on purchasing your new VTech product.

Before using this baby monitor, please read the **Important safety instructions**.

WHAT'S IN THE BOX



IMPORTANT SAFETY INSTRUCTIONS

The applied nameplate is located at the bottom of the baby unit base. When in use, basic safety precautions should always be followed to reduce the risk of fire, electric shock and injury, including the following:

- Follow all warnings and instructions marked on the product.
- Adult setup is required.
- CAUTION:** Do not install the baby unit at a height above 6.5 feet (2 meters).
- This product is intended as an aid. It is not a substitute for responsible and proper adult supervision and should not be used as such.
- This product is not intended for use as a medical monitor.
- Do not use this product near water, for example, near to a bath, sink, swimming pool or shower.
- CAUTION:** Use only the internal, non-user replaceable battery fitted to the parent unit. There may be a risk of explosion if a wrong type of battery is used for the parent unit. The battery cannot be subjected to high or low extreme temperature and low air pressure at high altitude during use, storage or transportation. Disposal of batteries in fire or a hot oven, mechanically crushing or cutting the battery can result in an explosion. Subjecting products or batteries to an extremely high temperature environment can result in explosion or leakage of flammable liquids, or gas. Products or batteries subjected to extremely low air pressures may result in explosion or leakage of flammable liquids, or gas. Dispose of used batteries according to the information in **The RBRC seal**.
- Use only the power adapters supplied with this product. Incorrect power adapter polarity or voltage can seriously damage the product.

Power adapter information:
Baby Unit Output: 5V DC 1A
VTech Telecommunications Ltd.
Model: VT05EUS05100

Power adapter information:
Baby Unit Output: 5V DC 1A
VTech Telecommunications Ltd.
Model: VT05EUS05100

Power adapter information:
Baby Unit Output: 5V DC 1A
VTech Telecommunications Ltd.
Model: VT05EUS05100

Power adapter information:
Baby Unit Output: 5V DC 1A
VTech Telecommunications Ltd.
Model: VT05EUS05100

Rechargeable battery information:
3.7V 5000mAh, 18.5Wh Lithium-ion battery
Zhuohai Great Power Energy Co., Ltd.
Model: G5P806090-5Ah-3.7V-151P

- The power adapter is intended to be correctly oriented in a vertical or floor mount position. The prongs are not designed to hold the plug in place if it is plugged into a ceiling, under-the-table or cabinet outlet.
- For pluggable equipment, the socket-outlet (power adapter) should be installed near the equipment and should be easily accessible.
- Unplug this product from the wall outlet before cleaning. Do not use liquid or aerosol cleaners. Use a damp cloth for cleaning.
- Do not modify the power adapters or replace with other third-party adapters.
- Do not allow anything to rest on the power cords. Do not install this product where the cords may be walked on or damaged.
- The product should only be operated from a power source indicated on the power adapter label or marking. If you are unsure of the type of power supply in your home, consult your dealer or electricity supply provider.
- Do not overload wall outlets or use an extension cord.
- Do not place this product on an unstable table, shelf, stand or other unstable surfaces.
- This product should not be placed in any area where proper ventilation is not provided. Any slots or openings in the back or bottom of this product are provided for ventilation. To protect from overheating, openings must not be blocked by placing the product on a soft surface such as a bed, sofa or rug. This product should never be placed near or over a radiator or heat source.
- Never insert any objects through any apertures or slots in the product as this can be dangerous and cause damage to the battery or other internal parts. Never spill any liquids on the product.
- To reduce the risk of electric shock, do not disassemble this product, but take it to an authorized service facility. Disassembling or removing parts of the product other than battery replacement via a battery door (if applicable) may expose dangerous voltages or other risks.
- You should test the sound reception every time you turn on the units or move one of the components.
- Periodically examine all components for damage.
- There is a very low risk of privacy loss when using certain electronic devices, such as baby monitors, cordless telephones, etc. **To protect your privacy, make sure the product has never been used before purchase, reset the baby monitor periodically by powering off and then powering on the units, and power off the baby monitor if you are not intending to use it for some time.**
- Children should be supervised to ensure that they do not play with the product.
- The small parts of this monitor can be swallowed by babies or small children. Keep these parts out of reach of children.
- The product is not intended for use by persons (including children) with reduced physical, sensory or mental capabilities, or lack of experience and knowledge, unless they have been given supervision or instruction concerning use of the appliance by a person responsible for their safety.

SAVE THESE INSTRUCTIONS

- Cautions**
- Use and store the product at a temperature between 32°F (0°C) and 104°F (40°C).
 - Mishandling batteries can cause burn, fire or explosion hazards.
 - Batteries should not be exposed to excessive heat such as bright sunshine or fire.
 - Do not expose the product to extreme cold, heat or direct sunlight. Do not place the product close to a heating source.
 - Warning—Strangulation Hazard—Children have STRANGLED in cords. Keep this cord out of the reach of children (more than 3 ft (0.9m) away). Do not remove warning label on the adapter cord.**
 - Never place the camera unit(s) inside the baby's crib or playpen. Never cover the camera unit(s) or parent unit with anything such as a towel or a blanket.
 - Other electronic products can cause interference to your parent unit and baby unit. Try installing your baby unit as far away as possible from the following electronic devices: wireless routers, radios, mobile telephones, intercoms, room monitors, televisions, personal computers, kitchen appliances (e.g. microwave ovens) and cordless telephones.

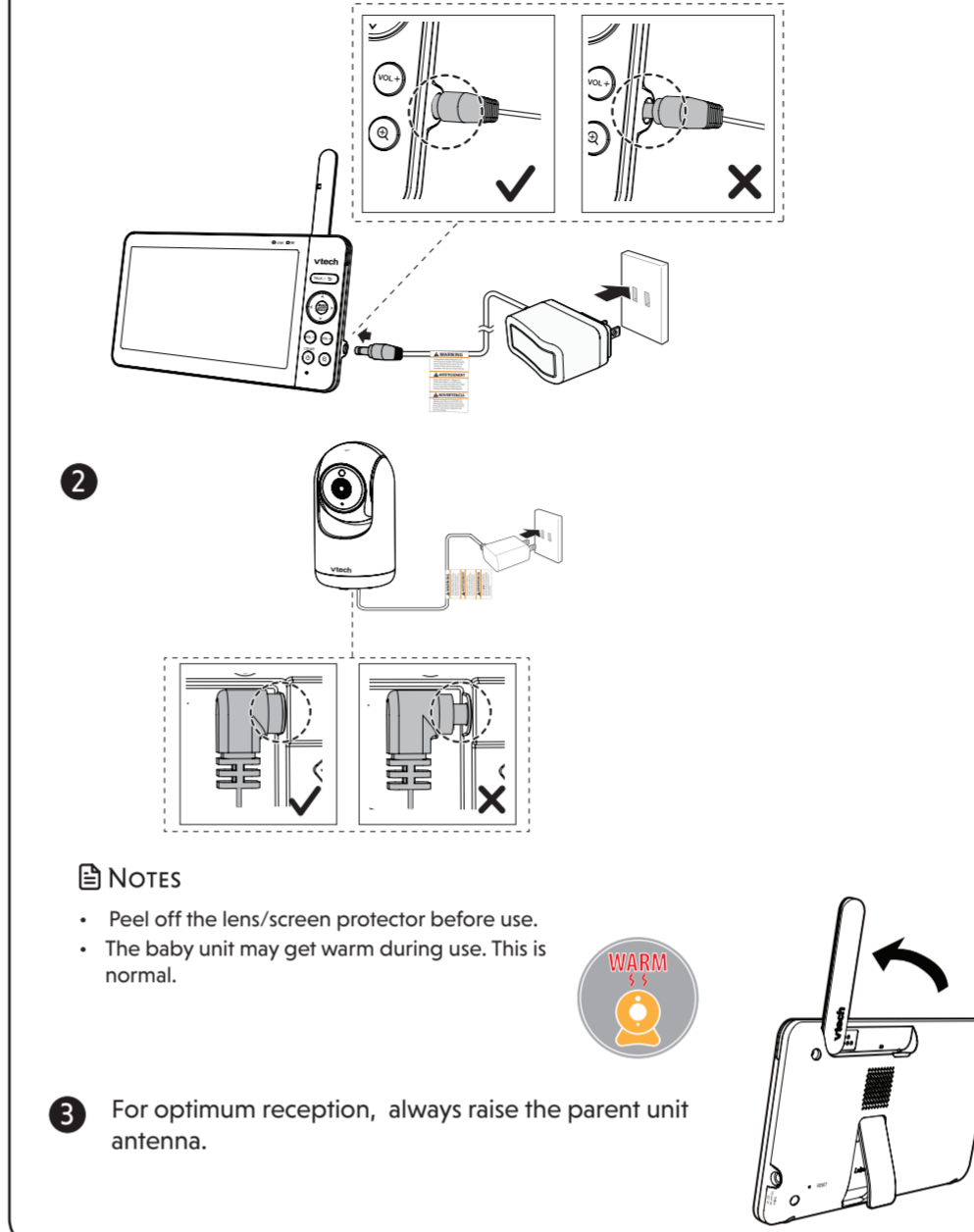
Precautions for users of implanted cardiac pacemakers
Cardiac pacemakers (applies only to digital cordless devices): Wireless Technology Research, LLC (WTR), an independent research entity, led a multidisciplinary evaluation of the interference between portable wireless devices and implanted cardiac pacemakers. Supported by the U.S. Food and Drug Administration, WTR recommends to physicians that:

- Pacemaker patients**
- Should keep wireless devices at least six inches from the pacemaker.
 - Should NOT place wireless devices directly over the pacemaker, such as in a breast pocket, when it is turned ON. WTR's evaluation did not identify any risk to bystanders with pacemakers from other persons using wireless devices.

Electromagnetic fields (EMF)
This VTech product complies with all standards regarding electromagnetic fields (EMF). If handled properly and according to the instructions in this user's manual, the product is safe to be used based on scientific evidence available today.

1 CONNECT THE BABY MONITOR

- Connect the parent unit and baby unit to the supplied adapters and mains supply. The parent unit will turn on automatically after connecting to the power socket.



1 CONNECT THE BABY MONITOR (CONT'D)

- NOTES**
- Before using the baby monitor for the first time, charge the parent unit battery for 12 hours. When the parent unit battery is fully charged, the battery icon segments become solid.
 - It takes longer to charge the battery when the parent unit is turned on. To shorten the charging time, turn the parent unit off while charging.
 - The standby time varies depending on the sensitivity level you set, your actual use and the age of the battery.

The battery icon indicates the battery status (see the following table).

BATTERY INDICATORS	BATTERY STATUS	ACTION
The screen displays . The red light flashes.	The battery has very little charge and may be used for only a short time.	Charge without interruption (about 30 minutes).
The battery icon segments are solid .	The battery is fully charged.	To keep the battery charged, connect it to AC power when in use.

2 POWER ON OR OFF THE BABY MONITOR

- Connect the baby unit to a power supply to turn it on. Disconnect the baby unit to turn it off.
- Press and hold to power on or off your parent unit. Once you power on both your baby unit and parent unit, your parent unit displays images from the baby unit, and the **LINK** LED light turns on.



3 POSITIONING THE BABY MONITOR

- CAUTION**
- Keep the baby unit out of the reach of your baby. Never place or mount the baby unit inside the baby's cot or playpen.
- Position the baby unit at least 3ft (1m) away from the baby's cot or playpen.
 - For hearing protection, make sure the parent unit is more than 3 feet (1 meter) away from the baby unit. If you hear any feedback noise from the parent unit, move the parent unit further away from the baby unit until the noise stops. You can also press **-VOL** on the parent unit to lower or mute the noise.
 - To avoid interference from other electronic devices, place your baby monitor at least 3 feet (1 meter) away from devices such as wireless routers, microwave ovens, mobile phones and computers.

OVERVIEW - PARENT UNIT

-
- LINK LED light**
 - On when the parent unit is linked to the baby unit.
 - Flashes when the link to the baby unit is lost.
 - BATTERY LED light**
 - On when the parent unit is connected to AC power, and the battery is charging.
 - Flashes when the parent unit battery is low and needs to be charged.
 - 3-level sound indicator light**
The lights indicate different sound levels detected from the baby unit.
 - Green light: low sound level.
 - Green and amber lights: moderate sound level.
 - Green, amber, and red lights: high sound level.
 - TALK**
 - Press and hold to talk to the baby unit. is displayed on screen while the button is pressed.
 - While in a sub-menu, press to exit.
 - Arrow keys**
 - Press to navigate leftward, upward, rightward or downward, within the main menu and sub-menus.
 - Press to move the baby unit camera leftward, rightward, upward or downward.
 - MENU/SELECT**
 - Press to enter the main menu.
 - While in a menu, press to confirm a selection, or save a setting.
 - VOL/ VOL +**
 - Increase or decrease parent unit volume.
 - Zoom**
 - Press to zoom in/out to different levels.
 - Power | LCD OFF**
 - Press and hold to turn on/off the power.
 - Press to turn on/off the LCD screen.
 - Microphone**
 - Antenna**
 - Power jack**
 - RESET**
 - Force reboot the parent unit.
 - Speaker**
 - Stand**


OVERVIEW - BABY UNIT

-
- Night Light Control Key**
 - Tap to turn on/off the night light.
 - Light Sensor**
 - Camera lens**
 - Infrared LEDs**
 - Allows you to see clearly in a dark environment.
 - Microphone**
 - Night light**
 - Speaker**
 - PAIR key**
 - The parent unit and baby unit provided are already paired.
 - Temperature sensor**
 - Power jack**
 - Slots for wall mounting**
- Status icons**
- Direct mode**: Parent unit and baby unit are connected to each other directly. Signal strength is indicated by the signal icon(s) on the right. The red bar(s) indicates no connection.
 - Patrol mode (For Advanced HQ Max Twin)**: Baby unit 1 and 2 are being viewed in **Patrol mode**.
 - Split mode (For Advanced HQ Max Twin only)**: Baby unit 1 and 2 are being viewed in **Split mode**.
 - Night vision is turned on.
 - Melodies and soothing sounds are playing.
 - Night light is turned on.
 - Auto night light brightness is activated.
 - Temperature alert is turned on.
 - Parent unit is muted.
 - Temperature measured at baby unit.
 - Battery level indicator
 - Low battery indicator

PARENT UNIT ICONS

- | Main Menu | Sub-menu | Options | Main Menu | Sub-menu | Options |
|-----------|----------|--|-----------|----------|---|
| | | Monitoring mode (For Advanced HQ Max Twin only) <ul style="list-style-type: none"> View baby units in Single mode. View baby units in Split screen. View baby units in Patrol mode (switch view every 10 seconds). | | | Screen Off Timer <ul style="list-style-type: none"> Turn the screen off timer OFF, or set the screen to turn off after 1, 3 or 5 minutes when no sound is detected. Select AUTO to set the Sound Sensitivity level for the screen to auto turn on when a sound level is detected that is higher than the set level. The screen will turn off after 50 seconds of no sound detection. |
| | | On/Off <ul style="list-style-type: none"> Toggle the night light on or off. | | | Color <ul style="list-style-type: none"> Select one of the 7 colors or loop all. |
| | | Adaptive Brightness <ul style="list-style-type: none"> Toggle the adaptive brightness on or off. When turn off, the brightness is set to highest. | | | Temperature Format <ul style="list-style-type: none"> Set the temperature display format between Celsius or Fahrenheit. |
| | | Timer <ul style="list-style-type: none"> Set the timer to turn the night light off after 15, 30 or 60 minutes, or always on. | | | Other <ul style="list-style-type: none"> Reset settings |
| | | Melodies and soothing sounds <ul style="list-style-type: none"> Play/Stop <ul style="list-style-type: none"> Toggle between play and stop. Library <ul style="list-style-type: none"> Select to play all melodies, or play one of the five melodies or five soothing sounds. Camera Volume <ul style="list-style-type: none"> Adjusts baby unit speaker volume. Timer <ul style="list-style-type: none"> Set the timer to stop playing after 15, 30 or 60 minutes, or play non-stop. | | | Alerts Settings <ul style="list-style-type: none"> Adjusts the alert tone volume level. Temperature <ul style="list-style-type: none"> Turn the temperature alert on/off. Select the temperature alert maximum and minimum temperature limits. Low Battery <ul style="list-style-type: none"> Toggle the low battery alert on or off. Lost Link <ul style="list-style-type: none"> Toggle the lost link alert on or off. |
| | | General settings <ul style="list-style-type: none"> Camera Volume <ul style="list-style-type: none"> Adjusts baby unit speaker volume. Screen Brightness <ul style="list-style-type: none"> Adjusts parent unit screen brightness. | | | Help and info <ul style="list-style-type: none"> Help <ul style="list-style-type: none"> Support Information System Info <ul style="list-style-type: none"> System Information |

NIGHT VISION

The baby unit has infrared LEDs that allow you to see your baby clearly at night or in a dark room. When the baby unit detects low light levels, the infrared LEDs are switched on automatically. The images from the baby unit are in black and white, and  appears on the parent unit screen.



NOTES

- A **click sound** from the baby unit is normal and occurs when your unit adapts to the environment lighting conditions.
- To achieve accurate and high quality video, your baby unit is equipped with an Infrared cut-off filter lens that optimizes color accuracy in bright, day-time environments. When the environment turns dark at night, this filter lens is withdrawn to enhance night vision quality. The brief **click sound** you hear is from the filter lens activating/deactivating as the unit switches from day to night vision (and vice versa).
- ✦ **Tip**
- Depending on the surroundings and other interfering factors, for example, lighting, objects, colors and backgrounds, the image quality may vary. Adjust the baby unit angle or place the baby unit at a higher location to prevent glare and a blurred display.

MOUNT THE BABY UNIT (OPTIONAL)



Not Included

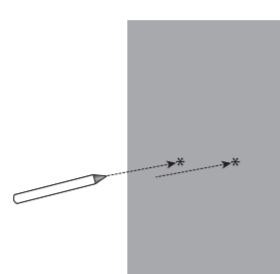
You will need to purchase the following items separately to mount your baby unit:

-  2 screws
-  2 anchors



- The screw types and anchors you need depend on the composition of the wall.

1

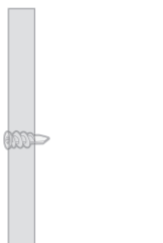


NOTE

- Check for reception strength and camera angle before drilling the holes.

Use a pencil and mark the position of two holes to be drilled, making sure they are the same distance apart as the wall mount holes under the baby unit base

2

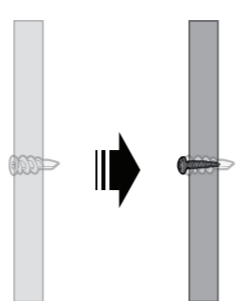


Drill two holes in the wall. If you drill the holes into a stud, go to step 3.

-OR-

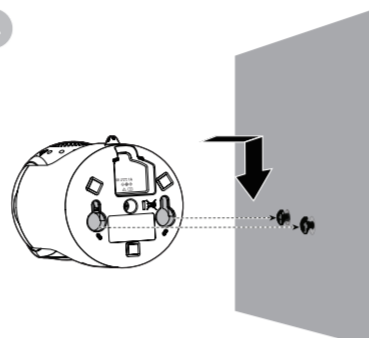
If you drill the holes into an object other than a stud, insert the wall anchors into the holes. Tap gently on the ends with a hammer until the wall anchors are flush with the wall.

3



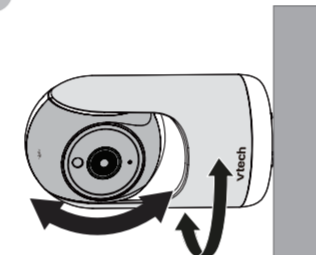
Insert the screws into the holes and tighten the screws until only 1/4 inch (6.5 mm) of the screws are exposed.

4



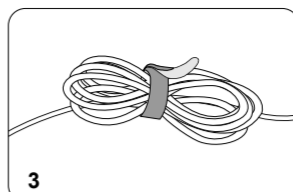
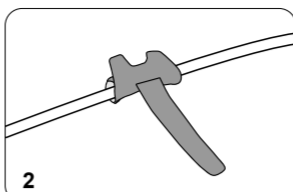
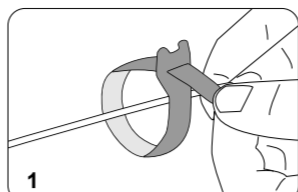
Align the wall mount holes on the baby unit with the screws on the wall. Slide the baby unit down until it locks into place.

5



Adjust the camera angle.

CABLE MANAGEMENT



NEED HELP?

For instructions and guides to make the best use of your baby monitor, and for the latest information and support, check out our online help topics and FAQs. The online help page will also be updated periodically to reflect product system updates.

Use your smartphone or mobile phone to access our online help.

- Go to <https://help.vtechphones.com/346700> or <https://help.vtechphones.com/346800>; OR
- Scan the QR code on the right. Launch the camera app or QR code scanner app on your smartphone or tablet. Hold the device's camera up to the QR code and frame it. Tap the notification to be redirected to the online help page.

- If the QR code is not clearly displayed, adjust your camera's focus by moving your device closer or further away until the image is clear.

If you would like to contact us, visit <https://help.vtechphones.com/cs>.

You can also call our Customer Support at 1 (800) 595-9511 [in US] or 1 (800) 267-7377 [in Canada] for help.



Advanced HQ Max online help
(Model no. 346700)



Advanced HQ Max Twin
online help
(Model no. 346800)

TECHNICAL SPECIFICATIONS

Frequency control	Crystal controlled PLL synthesizer
Transmit frequency	Baby unit: 2405 - 2475MHz Parent unit: 2407.5 - 2475 MHz Maximum power used by the transmitter: 0.1W (100mW)
Channels	32
LCD	7" Color LCD (IPS 1024 x 600 pixels)
Nominal effective range	Maximum power allowed by FCC and IC. Actual operating range may vary according to environmental conditions at the time of use.
Power requirements	Parent unit: 3.7V 5000mAh, 18.5Wh Lithium-ion battery Baby unit power adapter: Output: 5V DC @ 1A Parent unit power adapter: Output: 5V DC @ 2A

GENERAL PRODUCT CARE

To keep this product working well and looking good, follow these guidelines:

- Avoid placing near heating appliances and devices that generate electrical noise (for example, motors or fluorescent lamps).
- DO NOT expose to direct sunlight or moisture.
- Avoid dropping the product or treating it roughly.
- Clean with a soft damp cloth.
- Clean the USB charging port of dust, dirt, and lint regularly.
- DO NOT immerse the parent unit or the baby unit in water and do not clean under running water.
- DO NOT use solvents, household cleaning sprays, or liquid cleaners.
- Make sure the parent unit and the baby unit are dry before reconnecting to the mains supply.

STORAGE

When you are not going to use the video monitor for some time, store the parent unit, the baby unit and the adapters in a cool, dry place.

THE RBRC SEAL



The RBRC seal on the lithium-ion battery indicates that VTech Communications, Inc. is voluntarily participating in an industry program to collect and recycle these batteries at the end of their useful lives, when taken out of service within the United States and Canada. The program provides a convenient alternative to placing used lithium-ion batteries into the trash or municipal waste, which may be illegal in your area.

VTech's participation makes it easy for you to drop off the spent product at local retailers participating in the program or at authorized VTech product service centers. Please call **1 (800) 8 BATTERY** for information on Li-ion battery recycling and disposal bans/restrictions in your area. VTech's involvement in this program is part of its commitment to protecting our environment and conserving natural resources.

The RBRC Seal and **1 (800) 8 BATTERY** are registered trademarks of Call2recycle, Inc.

FCC AND IC REGULATIONS

FCC Part 15

NOTE: This equipment has been tested and found to comply with the requirements for a Class B digital device under Part 15 of the Federal Communications Commission (FCC) rules. These requirements are intended to provide reasonable protection against harmful interference in a residential installation. This equipment generates, uses and can radiate radio frequency energy and, if not installed and used in accordance with the instructions, may cause harmful interference to radio communications. However, there is no guarantee that interference will not occur in a particular installation. If this equipment does cause harmful interference to radio or television reception, which can be determined by turning the equipment off and on, the user is encouraged to try to correct the interference by one or more of the following measures:

- Reorient or relocate the receiving antenna.
- Increase the separation between the equipment and receiver.
- Connect the equipment into an outlet on a circuit different from that to which the receiver is connected.
- Consult the dealer or an experienced radio/TV technician for help.

WARNING: Changes or modifications to this equipment not expressly approved by the party responsible for compliance could void the user's authority to operate the equipment.

This device complies with Part 15 of the FCC rules. Operation is subject to the following two conditions: (1) this device may not cause harmful interference, and (2) this device must accept any interference received, including interference that may cause undesired operation.

To ensure safety of users, the FCC has established criteria for the amount of radio frequency energy that can be safely absorbed by a user or bystander according to the intended usage of the product. This product has been tested and found to comply with the FCC criteria. The baby unit shall be installed and used such that parts of all persons' body are maintained at a distance of approximately 8 in (20 cm) or more. The transmitter and antenna of the parent unit shall be held at least 1 in (2.5 cm) from your face.

This Class B digital apparatus complies with Canadian requirement: CAN ICES 3-(B)/NMB-3(B)

Industry Canada

This device contains licence-exempt transmitter(s)/receiver(s) that comply with Innovation, Science and Economic Development Canada's licence-exempt RSS(s). Operation is subject to the following two conditions: (1) This device may not cause interference. (2) This device must accept any interference, including interference that may cause undesired operation of the device.

The term "IC" before the certification/registration number only signifies that the Industry Canada technical specifications were met.

This product meets the applicable Innovation, Science and Economic Development Canada technical specifications.

RF radiation exposure statement

The product complies with FCC RF radiation exposure limits set forth for an uncontrolled environment. The baby unit should be installed and operated with a minimum distance of 8 in (20 cm) between the baby unit and all persons' body. Use of other accessories may not ensure compliance with FCC RF exposure guidelines. This equipment complies also with Industry Canada RSS-302 with respect to Canada's Health Code 6 for Exposure of Humans to RF Fields.

CALIFORNIA ENERGY COMMISSION BATTERY CHARGING TESTING MODE

This video monitor meets the California Energy Commission (CEC) regulations for energy consumption. Your video monitor is set up to comply with the energy-conserving standards right out of the box. Follow the instructions to install and charge the battery. The CEC battery charging testing mode is activated while charging. Even if the parent unit is paired to camera units, the CEC battery charging testing mode is activated while it is powered off and charging.

FOR CETL COMPLIANCE ONLY

La plaque signalétique appliquée est située au bas du socle de l'unité du bébé.

1. Observez toutes les instructions et mises en garde inscrites sur l'appareil.
2. L'installation par un adulte est requise.
3. **MISE EN GARDE:** N'installez pas l'unité du bébé à une hauteur supérieure à 2 mètres.
4. Ce produit a été conçu pour être un dispositif d'appoint seulement. Il n'est pas le remplacement d'une supervision responsable et adéquate par un adulte et ne devrait pas être utilisé comme telle.
5. Ce produit n'est pas conçu pour être utilisé en tant que moniteur médical.
6. N'utilisez pas cet appareil près de l'eau ni de toute autre source d'humidité, par exemple, près d'une baignoire, cuve à lessive, évier de cuisine, dans un sous-sol humide ni près d'une piscine, dans un sous-sol humide ou une douche.

7. **MISE EN GARDE:** N'utilisez que la pile fournie. Il peut y avoir un risque d'explosion si un mauvais type de pile est utilisé pour le dispositif apaisant. La pile ne peut pas être soumise à des températures extrêmes élevées ou basses et à une faible pression atmosphérique à haute altitude pendant son utilisation, son entreposage ou son transport. Le fait de jeter la pile dans au feu ou dans un four chaud, ou d'écraser ou de couper mécaniquement la pile peut entraîner une explosion. Le fait de laisser la pile dans un environnement à température extrêmement élevée peut entraîner une explosion ou une fuite de liquide ou de gaz inflammable. Une pile soumise à une pression d'air extrêmement basse peut provoquer une explosion ou une fuite de liquide ou de gaz inflammable. Mettez au rebut la pile usagée conformément aux informations figurant dans la section **Le scéau RBRC**.

8. N'utilisez que les adaptateurs inclus avec ce produit. L'utilisation d'un adaptateur dont la polarité ou la tension serait inadéquate risque d'endommager sérieusement le produit et mettre votre sécurité en péril.

 Informations sur les adaptateurs électriques :

Sortie adaptateur de l'unité du bébé : 5 V CC 1A

VTech Telecommunications Ltd. Modèle : VT05EU050100

-Ou-
Jiangxi Jian Aohai Technology Co., Ltd.


Modèle : A318-050100W-US2

Sortie adaptateur de l'unité du parent : 5 V CC 2A

VTech Telecommunications Ltd. Modèle : VT07EU050200

-Ou-
Jiangxi Jian Aohai Technology Co., Ltd.

Modèle : A938-050200W-US1

 Informations sur les piles rechargeables :

3.7V 5000mAh, 18.5Wh Lithium-ion batterie

Zhuihai Great Power Energy Co., Ltd.

Modèle : GSP806090-5A8-3.7V-LS1P

9. Lorsqu'ils sont branchés dans une prise de courant, les adaptateurs secteur ont été conçus pour être orientés correctement, soit à la verticale ou au plancher. Les broches n'ont pas été conçues pour supporter le poids du bloc d'alimentation et le maintenir en place si celui-ci est branché dans une prise au plafond, sous une table ou dans un meuble.
10. Pour les appareils raccordés, la prise de courant (de l'adaptateur secteur) doit être installée près de l'équipement et doit être facilement accessible.
11. Débranchez ce produit de la prise de courant avant de procéder au nettoyage. N'utilisez pas de nettoyants en aérosols. Utilisez un chiffon humide pour le nettoyer.
12. Ne coupez pas les cordons d'alimentation pour remplacer les fiches, car ceci peut présenter un danger potentiel.
13. Ne laissez aucun objet reposer ni appuyer sur le cordon d'alimentation. N'installez pas cet appareil dans un endroit où l'on risque d'écraser le cordon d'alimentation ou de le piétiner.
14. Ne faites fonctionner cet appareil qu'avec le type d'alimentation indiquée sur l'étiquette. Si vous ne connaissez pas le type d'alimentation que vous possédez à votre domicile, consultez votre marchand ou votre compagnie locale d'électricité.
15. Ne surchargez pas les prises de courant murales ni les rallonges électriques.
16. Ne placez pas cet appareil sur un chariot, meuble, trépidé, support de montage ni table chancelante.
17. Les trous et ouvertures du boîtier, situés à l'arrière de l'appareil ou sous celui-ci, servent à aérer l'appareil. Pour l'empêcher de surchauffer, ne bloquez sous aucun prétexte ces ouvertures et n'empêchez pas l'aération adéquate de l'appareil en le plaçant sur

un lit divan, tapis ou toute autre surface similaire. De même, ne le positionnez pas à proximité ni au-dessus d'une source de chaleur ou d'un calorifère. De plus, ne placez pas l'appareil dans un endroit avant de vous assurer qu'il y ait une bonne circulation d'air.

18. N'enfoncez jamais d'objets à travers les ouvertures de cet appareil, car ils pourraient entrer en contact avec des points de tension dangereux ou causer des courts-circuits qui peuvent dégénérer en incendies ou en risques d'électrocution. Ne renversez jamais de liquide dans ce produit.

19. Afin de réduire les risques d'électrocution, ne démontez pas cet appareil, mais apportez-le dans un centre de service autorisé.

20. L'ouverture du boîtier ou le retrait de toutes pièces que contient cet appareil, à l'exception de l'accès autorisé à certaines portes ou ouvertures, risque de vous exposer à des points de tension dangereux ou d'autres dangers. Un remontage incorrect peut par la suite présenter des risques d'électrocution.

21. Vous devriez tester la réception chaque fois que vous mettez l'appareil en fonction.

22. Examinez les composantes afin de vérifier si celles-ci ne sont pas endommagées.

23. Il existe un très faible risque de perte de confidentialité avec certains appareils électroniques (autres écoute-bébé, téléphones sans fils etc.). Pour l'éviter, s'assurer que le produit n'a jamais été utilisé avant l'achat, réinitialiser l'unité de façon périodique, éteindre l'écoute-bébé quand il n'est pas en cours d'utilisation.

24. Les enfants devraient être supervisés afin de vous assurer qu'ils ne jouent pas avec l'appareil.

25. Les petites pièces de ce moniteur peuvent être avalées par les bébés ou les petits enfants. Veuillez tenir ces pièces hors de portée des enfants.

26. Le produit n'est pas conçu pour être utilisé par des personnes (incluant des enfants) aux capacités physiques, sensorielles ou mentales réduites ou qui manquent d'expérience et de connaissances, à moins qu'on leur ait donné suffisamment de supervision ou d'instructions relativement à l'utilisation de l'appareil par une personne responsable de leur sécurité.

CONSERVEZ CES INSTRUCTIONS

Mises en garde

- Utilisez et entreposez le produit à une température entre 0 °C (32 °F) et 40 °C (104 °F).
- Risque de brûlure, risque d'incendie, risque d'explosion associé à une mauvaise manipulation de la batterie.
- N'exposez pas cet appareil à des froids ou des chaleurs extrêmes, ainsi qu'à la lumière directe du soleil. Ne l'installez pas près d'une source de chauffage.

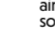
 Avertissement - Risque de strangulation - Les enfants se sont ÉTRANGLES dans des cordons.

Gardez ce cordon hors de portée des enfants (à plus de 0,9 m). N'enlevez pas cette étiquette.

• Ne jamais placer le moniteur à l'intérieur du berceau ou du parc de bébé. Ne jamais couvrir le moniteur ou l'unité (s) portative avec un article tel une serviette ou une couverture.

• D'autres produits électroniques peuvent causer des interférences auprès de votre caméra IP. Essayez d'installer votre caméra IP le plus loin possible de ces dispositifs électroniques : routeurs sans fil, radios, téléphones cellulaires, interphones, moniteurs de pièces, téléviseurs, ordinateurs personnels, appareils électriques de cuisine et téléphones sans fil.

• Les trous et ouvertures du boîtier, situés à l'arrière de l'appareil ou sous celui-ci, servent à aérer l'appareil. Pour l'empêcher de surchauffer, ne bloquez sous aucun prétexte ces ouvertures et n'empêchez pas l'aération adéquate de l'appareil en le plaçant sur

 Les simulateurs cardiaques implantés dans l'organisme

Les simulateurs cardiaques (ne s'applique qu'aux dispositifs numériques sans fil):

L'organisme "Wireless Technology Research, LLC (WTR)", une firme de recherche indépendante, a mené une évaluation pluridisciplinaire des interférences entre les téléphones sans fil portatifs et les simulateurs cardiaques implantés dans l'organisme. Appuyée par l'Administration des aliments et drogues (FDA) des États-Unis, la firme WTR recommande aux médecins:

Avs aux détenteurs de simulateurs cardiaques

- Vous devriez maintenir les dispositifs sans fil à au moins six pouces du simulateur cardiaque.
- Ils ne doivent PAS placer le téléphone sans fil directement sur le simulateur cardiaque, tel que dans une poche de chemise, lorsque celui-ci est en marche.

L'étude effectuée par l'organisme WRS n'a pas identifié de risque pour les détenteurs de simulateurs cardiaques causés par les gens qui utilisent des dispositifs sans fil à proximité de ceux-ci.

Champs électromagnétiques (EMF)

Ce produit de VTech est conforme à toutes les normes se rapportant aux champs électromagnétiques (EMF) standard. Si vous le manipulez correctement en suivant les instructions de ce guide, son utilisation sera sécuritaire pendant de nombreuses années, selon les meilleures évidences scientifiques dont nous disposons aujourd'hui.

DISCLAIMER AND LIMITATION OF LIABILITY

VTech Communications, Inc. and its suppliers assume no responsibility for any damage or loss resulting from the use of this user's manual. VTech Communications, Inc. and its suppliers assume no responsibility for any loss or claims by third parties that may arise through the use of this product.

Company: VTech Communications, Inc.

Address: 9020 SW Washington Square Road - Ste 555 Tigard, OR 97223, United States

Phone: 1 (800) 595-9511 in the U.S. or 1 (800) 267-7377 in Canada

NOTE: Before calling for service, please review the user's manual - a check of the Product's controls and features may save you a service call.

NOTE: Before calling for service, please review the user's manual - a check of the Product's controls and features may save you a service call.

NOTE: Before calling for service, please review the user's manual - a check of the Product's controls and features may save you a service call.

NOTE: Before calling for service, please review the user's manual - a check of the Product's controls and features may save you a service call.

NOTE: Before calling for service, please review the user's manual - a check of the Product's controls and features may save you a service call.

NOTE: Before calling for service, please review the user's manual - a check of the Product's controls and features may save you a service call.

NOTE: Before calling for service, please review the user's manual - a check of the Product's controls and features may save you a service call.

NOTE: Before calling for service, please review the user's manual - a check of the Product's controls and features may save you a service call.

NOTE: Before calling for service, please review the user's manual - a check of the Product's controls and features may save you a service call.

NOTE: Before calling for service, please review the user's manual - a check of the Product's controls and features may save you a service call.

NOTE: Before calling for service, please review the user's manual - a check of the Product's controls and features may save you a service call.

NOTE: Before calling for service, please review the user's manual - a check of the Product's controls and features may save you a service call.

NOTE: Before calling for service, please review the user's manual - a check of the Product's controls and features may save you a service call.

NOTE: Before calling for service, please review the user's manual - a check of the Product's controls and features may save you a service call.

NOTE: Before calling for service, please review the user's manual - a check of the Product's controls and features may save you a service call.

NOTE: Before calling for service, please review the user's manual - a check of the Product's controls and features may save you a service call.

NOTE: Before calling for service, please review the user's manual - a check of the Product's controls and features may save you a service call.

NOTE: Before calling for service, please review the user's manual - a check of the Product's controls and features may save you a service call.

NOTE: Before calling for service, please review the user's manual - a check of the Product's controls and features may save you a service call.

NOTE: Before calling for service, please review the user's manual - a check of the Product's controls and features may save you a service call.

NOTE: Before calling for service, please review the user's manual - a check of the Product's controls and features may save you a service call.

NOTE: Before calling for service, please review the user's manual - a check of the Product's controls and features may save you a service call.

NOTE: Before calling for service, please review the user's manual - a check of the Product's controls and features may save you a service call.

NOTE: Before calling for service, please review the user's manual - a check of the Product's controls and features may save you a service call.

NOTE: Before calling for service, please review the user's manual - a check of the Product's controls and features may save you a service call.

NOTE: Before calling for service, please review the user's manual - a check of the Product's controls and features may save you a service call.

NOTE: Before calling for service, please review the user's manual - a check of the Product's controls and features may save you a service call.

NOTE: Before calling for service, please review the user's manual - a check of the Product's controls and features may save you a service call.

NOTE: Before calling for service, please review the user's manual - a check of the Product's controls and features may save you a service call.

NOTE: Before calling for service, please review the user's manual - a check of the Product's controls and features may save you a service call.

NOTE: Before calling for service, please review the user's manual - a check of the Product's controls and features may save you a service call.

NOTE: Before calling for service, please review the user's manual - a check of the Product's controls and features may save you a service call.

NOTE: Before calling for service, please review the user's manual - a check of the Product's controls and features may save you a service call.

NOTE: Before calling for service, please review the user's manual - a check of the Product's controls and features may save you a service call.

NOTE: Before calling for service, please review the user's manual - a check of the Product's controls and features may save you a service call.

NOTE: Before calling for service, please review the user's manual - a check of the Product's controls and features may save you a service call.

NOTE: Before calling for service, please review the user's manual - a check of the Product's controls and features may save you a service call.

NOTE: Before calling for service, please review the user's manual - a check of the Product's controls and features may save you a service call.

NOTE: Before calling for service, please review the user's manual - a check of the Product's controls and features may save you a service call.

NOTE: Before calling for service, please review the user's manual - a check of the Product's controls and features may save you a service call.

NOTE: Before calling for service, please review the user's manual - a check of the Product's controls and features may save you a service call.



Specifications are subject to change without notice.
© 2025 VTech Communications, Inc.
All rights reserved. 06/25: 346700_346800_US_QSG_V1

